



Sinha Knit & Denims Ltd.

(A Sister Concern of ACME Group)

Sinha Knit & Denims  
Bangladesh



## Company Profile

**ACME** Group is one of the leading and diversified global conglomerates in Bangladesh, with offices in all major cities and dedicated to bringing the highest quality products and services to our customers. We have an annual turnover of US \$200 million with diversified interests in Pharmaceuticals, FMCG, Agricultural Food Processing Industries Limited, Apparels, Printing & Packaging Services, Trading Services, C & F Services and more.

The conglomerate has an outstanding record of all around excellence and growth in the relevant business activities.

**Sinha fabrics Limited** has started its journey early 1997 as 100% export oriented manufacturing company under the umbrella of ACME group, which was incorporated in 1954. We started with only 350 sets flat knitting machine. In 2001 **Sinha Knit Industries Limited** has been added to enhance its existing capacity to render the services to more customers with more volume and now it is running with near about 4 million pieces export per annum with 4000 employees.

Now ACME group flourish another wing **Sinha Knit and Denims Ltd.** in its Apparel industry sector. Sinha Knit and Denims has land area 6.37 acre having 3,00,000 sft working floors consist of 3 building and 12 sheds with 100% sewing capacity for producing 5,50,000 pcs per month in 14 lines and also having 100% washing capacity for producing 9,75,000 pcs per month with various dry process facility as per requirement. The additional facilities are printing, embroidery and yarn dyeing etc.



## Policies

We believe in the quality and the company's first and foremost policy is to maintain and ensure the customer's satisfaction level.

Time is money, **on time delivery** is another great achievement for us, which makes us different from the other company in the sweater industry.

To adopt with the changing environment, we always welcome the **cutting edge technology** and have the thrust for the continuous development. We always prefer to use environment friendly technology.

Technology alone is not everything, man behind the machines is also very important. Sinha Knit Industries Limited maintains a very good environment to develop skill manpower through **HRD**.





**I** look forward with confidence and aspiration the bright future of newly setup company. I also take opportunity to mention here that it is a company will be manned by the young brand of technical persons who are having creative ability which is crying need of the time. This instinct will push our company fast towards growth day by day by adapting latest technology to produce goods attractively and economically so that it attracts our valued buyers. Our people have ability to learn fast and adapt modern science for the betterment of the company.

*Our goal is to provide buyer/consumer highest quality and timely delivery of goods with precision and sophistication reflecting the market's need in which we are growing today and we are closer to that goal than ever before. It is of great pride for me that the employees are working toward the common goal of our company.*

*I have feeling of satisfaction and believe that my committed service to you would continue to guide towards a brighter future.*

**Mizanur Rahman Sinha**

Chairman

Sinha Knit and Denims Ltd.

Sinha Knit Industries Ltd.

Ex. State Minister

Ministry of Health and Family Welfare

Govt. of Peoples Republic of Bangladesh



I have the pleasure to present our company Brochure. This Brochure in nut shell describes our company history policies, objectives, and services.

I take this opportunity to thank our worth customers whose continued patronage and confidence in our quality products inspire us to extend the best of services and enables us to provide value for their money.

We are committed to total customer satisfaction by identifying their specific needs, translating them into quality products and being dedicated to provide high quality garments to our existing and future potential customers.

I therefore, seek continued support of our valued customers, and welcoming future potential customers and thank our well-wishers who have contributed to the growth of the organization.

*Tanveer S.L.*

**Tanveer Sinha**

Managing Director  
Sinha Knit and Denims Ltd.  
Sinha Knit Industries Ltd.

## CAD & Sample

**Area :** 3,200 Sft

### **Machines & Software:**

- |   |        |
|---|--------|
| • Sample Sewing Machines                  | 24 Pcs |
| • Ploter (Winda Brand)                    | 1 Pc   |
| • Ploter (Lectra Brand)                   | 1 Pc   |
| • Ploter (Hanbond Brand)                  | 1 Pc   |
| • Digitizer Camera (Nikkon)               | 1 Pc   |
| • Pattern Cutter (Winda Brand)            | 1 Pc   |
| • Pattern Cutter (Hanbond)                | 1 Pc   |
| • Cad Software (Lactra, Optitex, Eastman) |        |

**Manpower:** 30

**Prod. Capacity:** 1,800 Pcs Per Month



## Cutting

**Area:** 14,000 Sft

### **Machines & Tables:**

- Cutting Machines (Eastman & KM-10 inch) 16 Pcs
- Tables (Length: 65' / Width: 6' 2") 8 Pcs
- Fusing Machines ( Hashima, Fida) 4 Pcs
- Fabric Inspection Machine (Uzu) 2 Pcs
- Auto Spreder Machine (Eastman) 2 Pcs
- Bulmark Spreading Machine 1 Pc
- Fabric Relaxing Machine (Eastman) 2 Pcs
- Band Knife Machine (FIDA) 1 Pc

**Manpower:** 103

**Prod. Capacity:** 7,50,000 Pcs Per Month



## Sewing

**Area** : 60,000 Sft  
**Total Line** : 17  
**Prod. Capacity** : 7,50,000 Pcs Per Month





## Printing & Embroidery

### Printing

**Area:** 5,500 Sft

#### Machines & Tables:

- Printing Table (L-60' / W-4' 6") 4 Pcs
- Belt Curing Machine (Ahjin) 1 Pc
- Heat Seal Machine (China) 9 Pcs

**Manpower:** 15

**Prod. Capacity:** 4,00,000 Pcs Per Month

### Embroidery

**Area:** 2,000 Sft

#### Machines:

Embroidery Machine (Sun Star) 2 Pcs  
(9 Color, 20 Heads)

**Manpower:** 15

**Prod. Capacity:** 4,00,000 Pcs Per Month



## Finishing

### Area:

Finishing : 15,000 Sft

C-TPAT : 7,000 Sft

Finish Goods : 20,000 Sft

Double Headed Metal Detector (Hashima) 1 Pc

Needle Detector Machine (Lock) 1 Pc

Vacuum Ironing Table (JBL, FIDA, LOCAL) 43 Pcs

Spot Removing Machine (Oshima) 2 Pcs

Thread Sucker Machine (Max, JBL, LOCAL) 4 Pcs

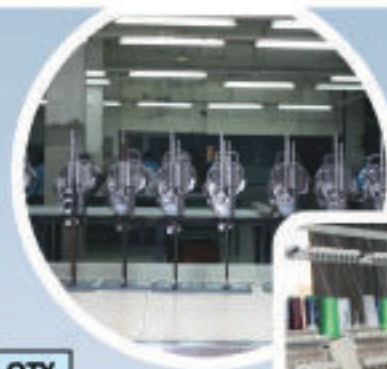
Snap Fixing Machine (Fida, Local) 21 Pcs

Button Pull Test Machine 1 Pc

**Production Capacity : 7,50,000 Pcs Per Month**



## Machine Information



SL#	Description	Brand	QTY
1	Auto Pocket Welt Machine	Juki	4
2	Pocket Setter Machine	IMB	4
3	Loop Satter Machine	IMB	2
4	Auto btm hemming machine (Lock & Chain stitch)	Zusun	13
5	Auto Pocket Hemming Machine	Erumac	3
		IMB	1
6	Pettern Sewer Machine	Erumac	2
		IMB	3
7	Auto Waistband Machine	AGM	4
8	Programmable Single Needle Lock Stitch Machine	Brother	50
		Jack	270
		Juki	20
		Jack	12
		Brother	145
9	Double needle Fixed Bar lock stitch machine programmable	Typical	254
		Erumac	36
		Erumac	12
		Juki	16
10	Five Thread Over Lock Machine	Brother + Juki	44
		Juki	12
		Jack	60
		Zusun	8
		Jack	31
11	Programable Bartack Machine	Typical	44
		Brother	15
		Juki	28
		Zozy	2
12	Programable Button Attach Lock Stitch Machine	Zusun	4
		Brother	8
		Juki	2

SL#	Description	Brand	QTY
13	Three Needle Feed of the arm Machine	Erumac	18
		Brother	19
		Brother	4
		Sunsatr	5
14	Multi Needle Chain Stitch Machine	Kansai	38
15	1 Needle Chain Stitch Machine	Juki	2
		Jack	36
		Zusun	4
16	Programmable Eyelet Button Hole Machine	Brother	2
17	Programmable Button Hole Lock Stitch	Juki	3
		Brother	4
18	Saddle Stitch Machine	Juki	2
19	Flat Lock Loop Make Machine	Jack	10
		Zusun	4
		Kansai	1
		Pagasus	1
20	Blind Stitch Machine	Zusun	1
21	Thread Cutter Machine	Zusun	4
<b>Total</b>			<b>1271</b>

# WASHING PLANT



WASHING PLANT

# Wet & Dry Process

**Area:** 21,000 Sft

**Wet Process:** 21,000 Sft, **Landing:** 6,000 Sft

**Dry Process:** 11,200 Sft

**ETP Area:** 11,200 Sft

**Gray House (For Unwashed Garments):** 9,300 Sft

**Transport:** 6 Dedicated Cover Van (Depends on buyer requirement we are outsourcing transport)

**Lab:** A Well Equiped Lab

**ETP:** A Bio-Chemical ETP (70 m<sup>3</sup>/hr (70000 Liter Per Hour)

**Manpower:** 600

**Prod. Capacity:** 9,75,000 Pcs Per Month

## WET PROCESS

### Types of Wash

Rinse /Garments Wash

Acid Wash

Enzyme & Bleach Wash

Over Dyeing

Enzyme & Stone Wash

Pigment Dyeing

Towel Wash

## DRY PROCESS

### Types of Dry Process

Hand Scraping

Destroy

Whisker

Press Crinkle

PP Spray

Iron 3D Crinkle

Grinding

3D Wrinkle

Tagging



## Machinery Information (Washing Plant)

WASHING MACHINES				
SL#	Machine Name	Origin	Capacity	Qty
1	Industrial Front Loading Washing Machine	Turkey	400 kg	6
2	Industrial Front Loading Washing Machine	Turkey	500 kg	3
3	Industrial Front Loading Washing Machine (Ramson)	Indian	500 kg	2
4	Industrial Washing Machine (For Acid Wash)	Chinese	275 kg	2
5	Industrial Bely Type Washing Machine	Local	220 KG	4
Total=				17
HYDRO MACHINES				
SL#	Machine Name	Origin	Capacity	Qty
1	Industrial Hydro Extractor Machine	Chinese	250 kg	6
2	Industrial Hydro Extractor Machine	Local	100 KG	2
Total=				8
DRYER MACHINES				
SL#	Machine Name	Origin	Capacity	Qty
1	Industrial Front Loading Steam Dryer Machine	Chinese	250 kg	10
2	Industrial Front Loading Gas Dryer Machine	Chinese	250 kg	2
3	Industrial Front Loading Gas Dryer Machine	Local	120 kg	5
Total=				17
Upcoming Washing Machines				
SL#	Machine Name	Origin	Capacity	Qty
1	Industrial Front Loading Washine Machine (Tonelo)	Italy	500 kg	3
2	Industrial Front Loading Washine Machine (Smartex)	Turkey	500 kg	2
Upcoming Dry Process Machines				
SL#	Machine Name	Origin	Capacity	Qty
1	Jeanologia Laser Machine	Spain	10-15 Sec per pattern	2

DRY PROCESS MACHINES				
SL#	Machine Name	Origin	Capacity	Qty
1	Industrial Ozon Generator Machine	Chinese	1000 gm	1
2	Ozon Tumbler Machine	Ramson	450 lbs	2
3	Robotic Pp Cabinet (6 Head)	Chinese	6 Head	1
4	Hand Brushing Mold (Vertical + Horizontal)	Chinese	N/A	15
5	Tagging Machine	Chinese	N/A	15
6	Hot & Cool Air Blaster Gb-3	Chinese	N/A	1
7	3 D Crinkle Machine	Chinese	N/A	4
8	Single Head Grinding Machine	Chinese	N/A	7
9	Industrial Woven Machine	Local	N/A	1
Total =				47
SAMPLE & RND MACHINES				
SL#	Machine Name	Origin	Capacity	Qty
1	Industrial Front Loading Sample Washing	Turkey	40 kg	2
2	Industrial Front Loading Sample Washing	Turkey	30 kg	1
3	Industrial Sample Machine Bely Type	Local	50 KG	5
4	Industrial Sample Dryer Machine	Chinese	50 kg	3
5	Industrial Sample Hydro Extractor Machine	Chinese	25 kg	3
Total=				14
LAB MACHINES				
SL#	Machine Name	Origin	Capacity	Qty
1	IR Sample Dyeing Machine for Yarn and Fabric	China		1
2	Forced Convection Oven	EU	150Utter	1
3	Digital Weight Scale	EU		1
4	Colour Assessment Cabinet	UK		1
5	The Seven Compact™ pH/Ion meter	switzerland		1
6	Crockmeter	China		1
7	Martindale Abrasion & Pilling Tester	China		1
8	Washing Colorfastness Tester (Smaller capacity)	China	16 Patten	1
9	ISO +AATCC Perspiration Tester	China		1
10	FOM71CLS Electrolux Reference Machine	Sweden		1
Total=				10

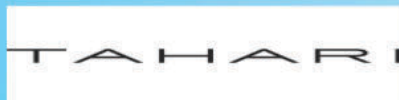
## Utility

Description	Capacity	Brand	Qty
Sub- Station	1250 KVA/ 1000 KVA		1
Disel Generator	1000 KVA	Perkins	1
	400 KVA	Perkins	1
	175 KVA	Perkins	1
Gas Generator	419 KvA	Guascor	1
Screw Air Compressor	100 HP~75 KW	Atlascopco	2
	30 HP~22 KW	Sanlion	1
Piston Air Compressor	15 HP~11 KW	Jucal	1
	10 HP~7KW	Jucal	1
	8 HP~6 KW	Da Wang	1
Gas Boiler	5000 KG	New Generation	1
	3000 KG	New Generation	1
	2000 KG	New Generation	1
Jute Boiler	2000 KG	EPCB (China)	1
	1000 KG	Bangladesh	1
Electric Boiler	100 KG	New Generation	1
Gas Line	15 PSI	Titas	1
Deep Tubewell	500 Feet*24 inch	Bangladesh	3



## Buyers Handle

SEWING			
Name	Country	Name	Country
Funday	Russia	Ripley	Peru/ Chile
ZUDIO	India	Fallabella	Argentina
Jeaniologie	Canada	Cia. Hering	Brazil
DMR	Russia	Ostin	Russia
Splash	UEA	Shimamura	Japan
Tahari	USA	Petrol	Netherland
Topten	South Korea		



WASHING			
Name	Country	Name	Country
Funday	Russia	Ripley	Peru/ Chile
ZUDIO	India	Fallabella	Argentina
Jeaniologie	Canada	Cia. Hering	Brazil
DMR	Russia	Ostin	Russia
Splash	UEA	Shimamura	Japan
Tahari	USA	Petrol	Netherland
Topten	South Korea		



# COMPLIANCE

## Compliance

Sinha Knit & Denims Limited complies with various Code of Vendor Conduct to do business with them. We respect international human rights and

- Our factory is compliant with the laws of the country;
- We discourage child labor, forced labor in our factory;
- We do not accept discrimination in male and female labor;
- We allow freedom of association and right to collective bargaining;
- We meet minimum wages and benefits standards;
- Working hours standards;
- We strictly follow the standards of health and safety;
- Anti to harassment and abuse;
- Anti to corporal punishment;
- Environment, health and safety.



### Certification:



Now we are in the process to obtain:



## Others

### Medical Check-up

We provide periodical medical check-up for workers & staff. This facility is provided by trained staff. We have following ward:

- ◆ Male Ward
- ◆ Female Ward

### Day Care

- ◆ Two Baby Sleeping Rooms
- ◆ Play Ground
- ◆ One Breastfeeding Room

### Dining

Shift -A : 480 Persons Can sit at a time  
Shift -B : 480 Persons Can sit at a time



## Go Green (Factory View)

As sustainable practices and eco-friendly operation are emerging as a global standard in the developed countries we are now compelled to set up the green factories to cope up with the world standards.

Factory has 2 storied guest house with mini zoo and a beautiful garden.

